

NOTHING TO TALK ABOUT SO LET'S TALK ABOUT WEAPONS!



JUSTICE DEPT. OF MAD MIT'S MAD OF BLADES, CURRENTLY DEVELOPING FROM MORE POWER BUT TO SEE IF ANY WORK.

IN FUTURE, THE AUTHOR WILL MENTARY FINEST FOCUS TRAILERS!



IN REGARDS TO WEAPONS APPEARING IN THE MANGA, THEY WERE DESIGN AFTER TAKING INTO THAT EX-GRACE AS BLUEPRINTS!

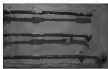


TUBULAR POWELL POSSESSES A SPECIAL CHARACTER'S STYLE, VERY SIMILAR TO MAD MIT'S UNFINISHED PROJECTS, MORE WEAPONS ACTIVITY IN FUTURE.

1. TŪU CHŪI DA DŪO (TUBULAR POWELL SWORD)

BACKGROUND OF THE INCIDENTS ERA, IT HADN'T BEEN COVERED CLEARLY SINCE THE FIRST CHAPTER TELL MORE BECAUSE REGARDLESS OF THE ERA, THEY ARE SIMILAR, IT'S BETTER TO KEEP IT VAGUE HOWEVER, THOSE WHO HAVE READ "BLADES OF THE GUARDIAN" CHAPTER 17 ON THE INTERNET WOULD KNOW, THIS STORY TAKES PLACE DURING THE SUU DYNASTY THEREFORE, THE WEAPONS, WHICH APPEAR IN THIS MANGA, ARE PORTRAIED WITH REFERENCE TO THE SUU DYNASTY SYSTEM.

YET THE MORE INTERESTING ONE AMONG THE WEAPONS FROM SUU DYNASTY, IS THIS LONG SWORD THAT DŪO WA LOVES TO USE, THE TUBULAR POWELL.



AUTHOR OBVIOUSLY DID NOT KNOW OF THIS SWORD'S EXISTENCE, BUT CAME TO FIND OUT ABOUT SUCH A COOL SWORD THROUGH ANCIENT WEAPONS EXPERT, MR. HAN GENE, DIRECTION AND INFORMATION PROVIDED. MR. HAN GENE SPECULATES THAT THIS SWORD ORIGINATES FROM THE AREA OF WEST ASIA AND CAUCASUS, PASSED THROUGH MONGOLIA AND CHINA'S NORTHERN AREA, ARRIVED IN THE KOREAN PENINSULA BEFORE ENTERING JAPAN.

EXPRESSING MY GRATITUDE ONCE AGAIN TO MR. HAN GENE.



AND HE FROK THE SUT A SWORD, WHO SCORCHED CURT BY
 HIS OWN POWERS OF A REPTILIAN HOUSE,
 MOREOVER A SURE SACK

2. HUAN SHOU PAO (RING POWELL SWORD)

HUAN SHOU PAO IS THE STANDBY SWORD
 CHOICE FOR THE DYNASTY OFFICIALS. IT IS SAID
 THAT THE SWORD WAS SPECIALLY DESIGNED
 FOR PEOPLE. HUAN SHOU PAO IS NOT
 COMMON. THE REASON IS THE SWORD AT THE END OF THE
 SWORD, NO PATTERN AND MARK. COMPARED TO THE
 COMMON, A CLASSIC SWORD FROM
 DOWN FROM THE HAN DYNASTY.

IT WAS ALSO USED AS A MILITARY SWORD
 DURING THE THREE KINGDOMS OF KOREA, AFTER
 WHICH THROUGH ENGLISH, IT ENTERED JAPAN
 DURING THE NINTH CENTURY, KNOWN AS "YUKUJI
 NO TACHI"

AS A SWORD, COME IT WAS AN OFFICIAL SWORD,
 AND WE COULD SAYING THAT THE IDENTITY OF ITS
 OWNER WAS NOT THAT SIMPLE AT A GLANCE.



WORLD CHAMPION'S SWORD, SPECIALLY AS SO HEAVY
 SHOULD, BUT COMPARED TO THE ONE SWORD THE
 OTHER IS MUCH LIGHTER.



HISTORICAL INFORMATION OF
 HUAN SHOU PAO, AKA "THE
 POWELL OF THE HAN SWORD"



3. DIE XIE SEVEN DUTIES

DIE XIE BELT IS A COMMON BELT USED BY MEN OF QING DYNASTY, EQUIPPED WITH MICROCHIPS TO SURVIVE BY THE COUNTDOWN, THEREFORE KNOWN AS SEVEN DUTIES. THEREFORE, QAO MA AND THE DEAD ESCORT TEAM WHO SPEND YEARS ON THE BACK, NATURALLY HAVE A SET OF DIE XIE BELT!

CURRENTLY HISTORICAL MOVIES AND TV DRAMAS IN CHINA HAVE A STRICT ORIGINAL SCRIPT



EVERY RESEARCH RESPONSE AND COMMUNICATION, IS THE AUTHOR'S MOTIVATION AND VITALITY, SO SHE WILL NOT MISS!

ALTHOUGH I HOPE TO TELL YOU MORE ABOUT HISTORY AND CULTURE, BUT IN THIS TIME, I WANT TO CONTINUE WITH THE SCRIPT...

